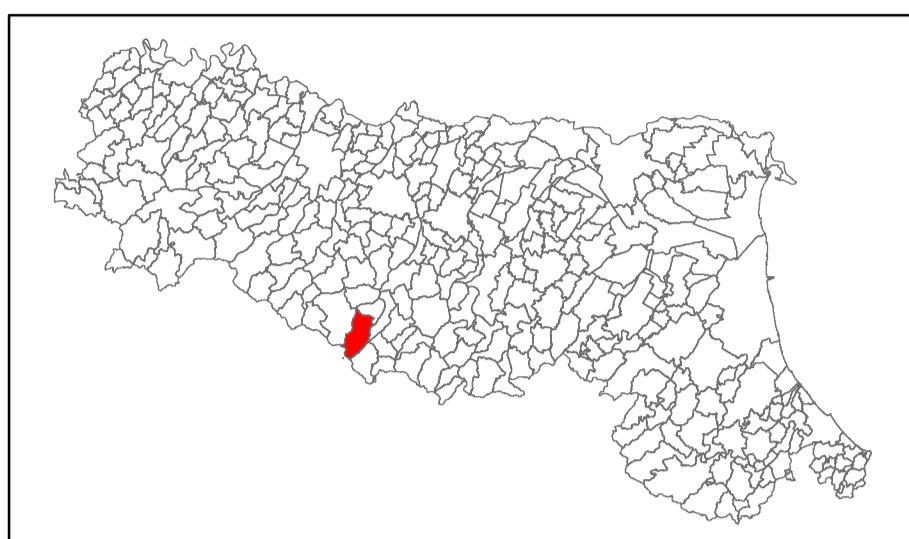


MICROZONAZIONE SISMICA

Carta delle Velocità delle onde di taglio

scala 1:5.000

Regione Emilia-Romagna
Comune di Frassinoro

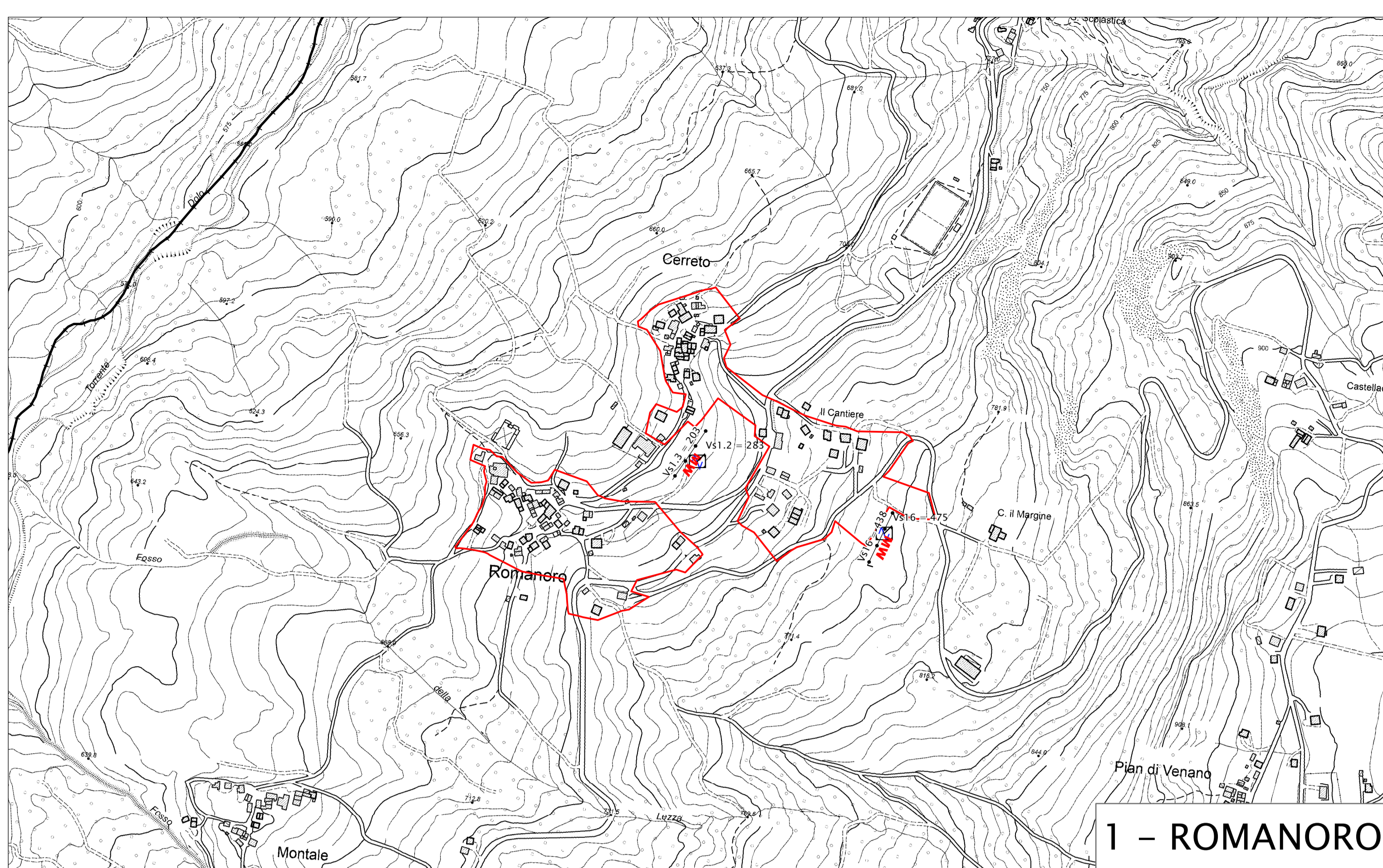
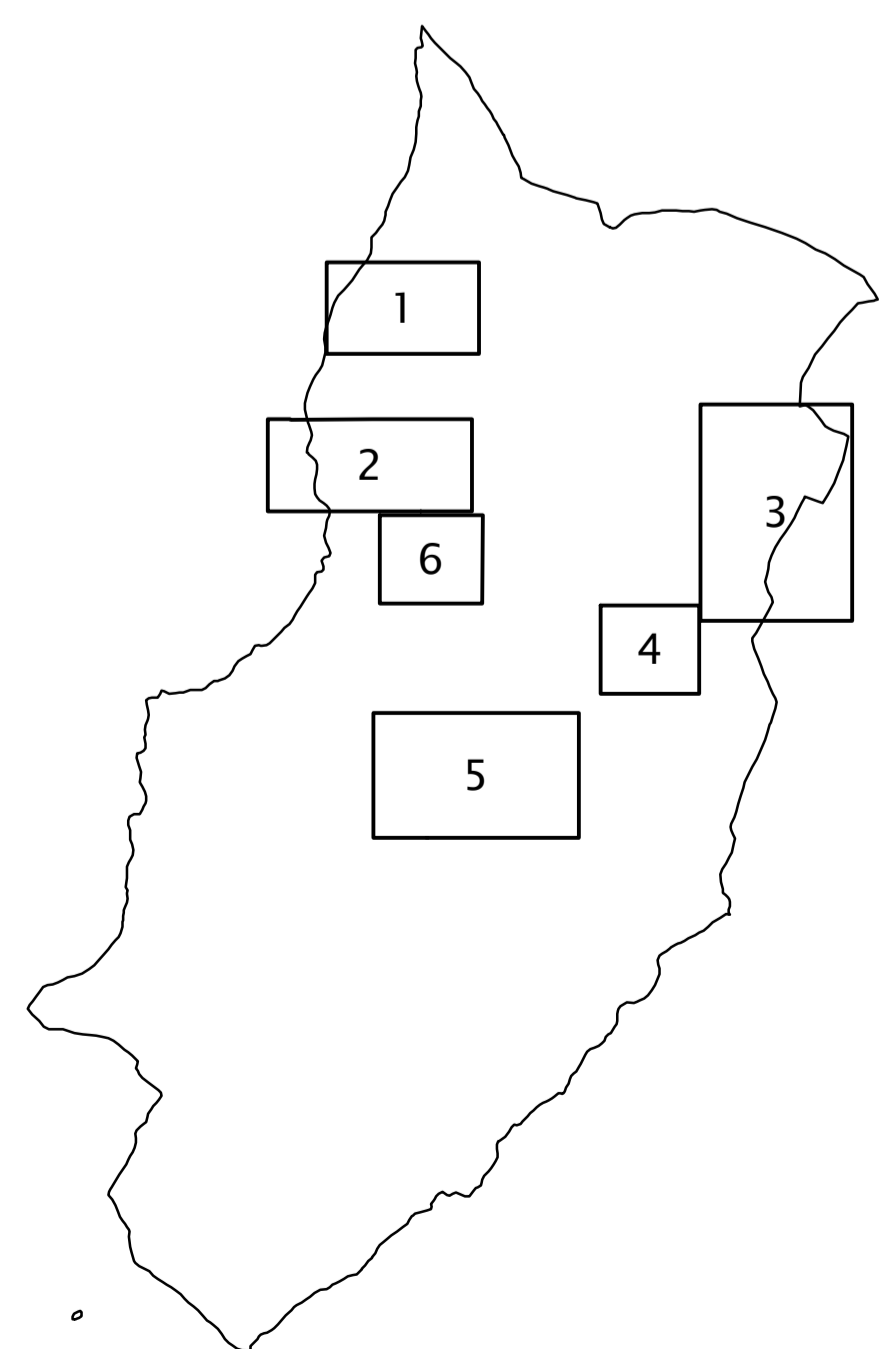
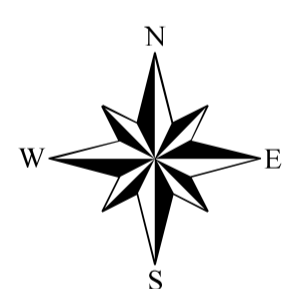


| | | |
|---------------------------|---|------------------------|
| Regione Emilia-Romagna | Soggetto realizzatore: Dott. Geol. Valeriano Franchi | Data: Novembre 2023 |
|---------------------------|---|------------------------|

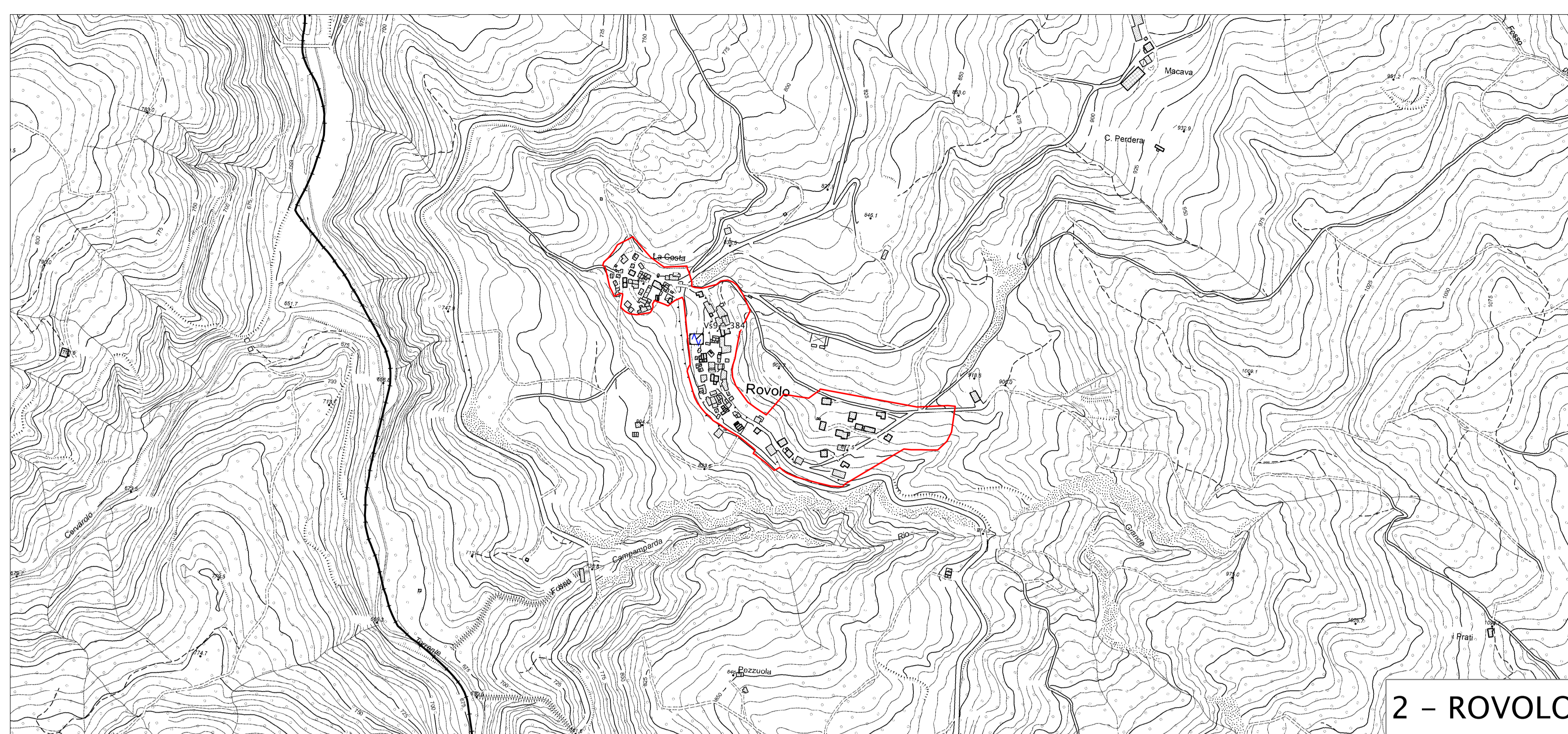
Legenda

- MW MASW con indicato il valore di Vsh in m/s
Vs10 = 206
- Stazione microtremore a stazione singola con indicato il valore di Vsh in m/s
Vs12 = 280
- Limite aree indagate PUG 2023
- Limite comunale

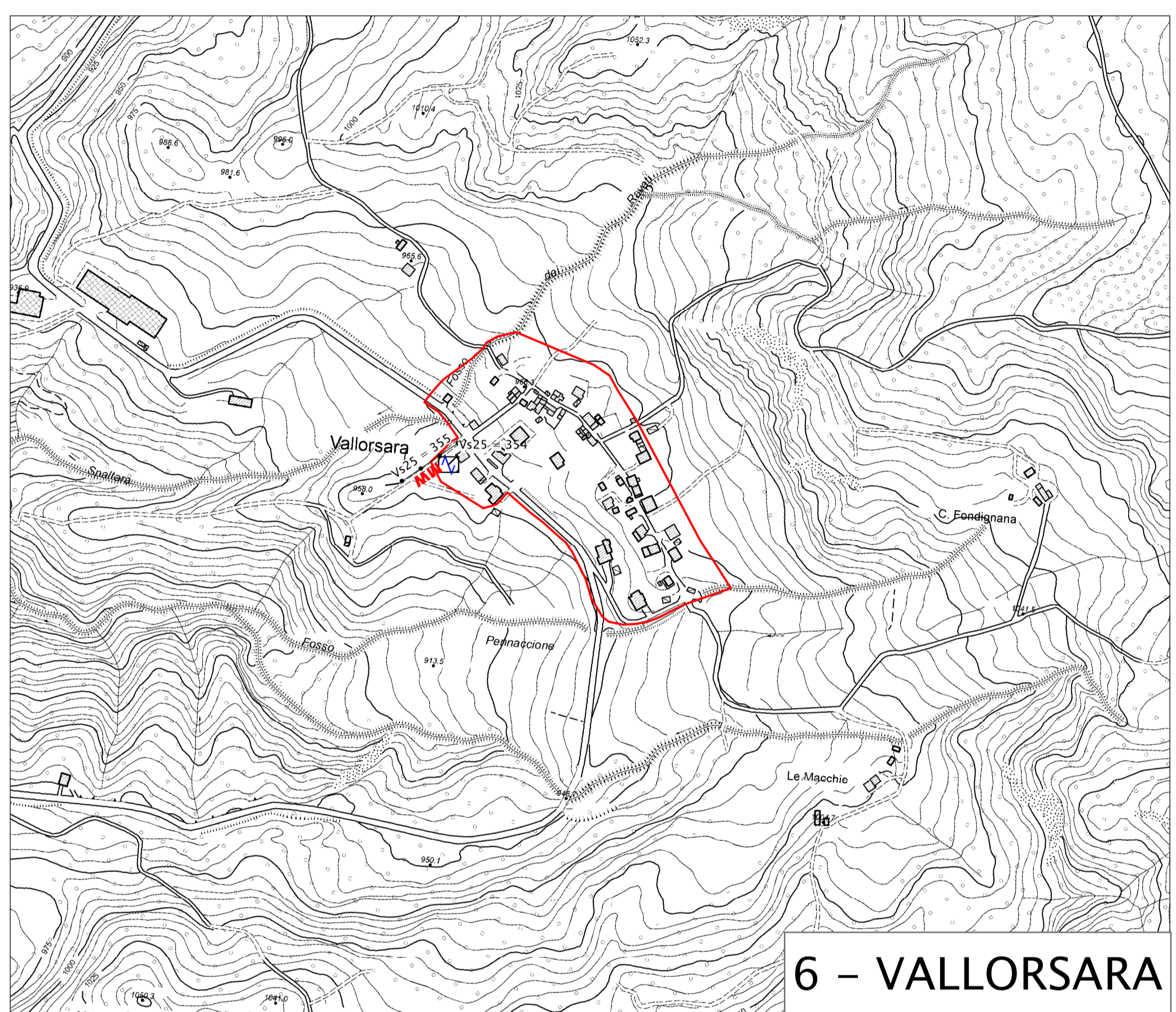
0 125 250 500 Metri



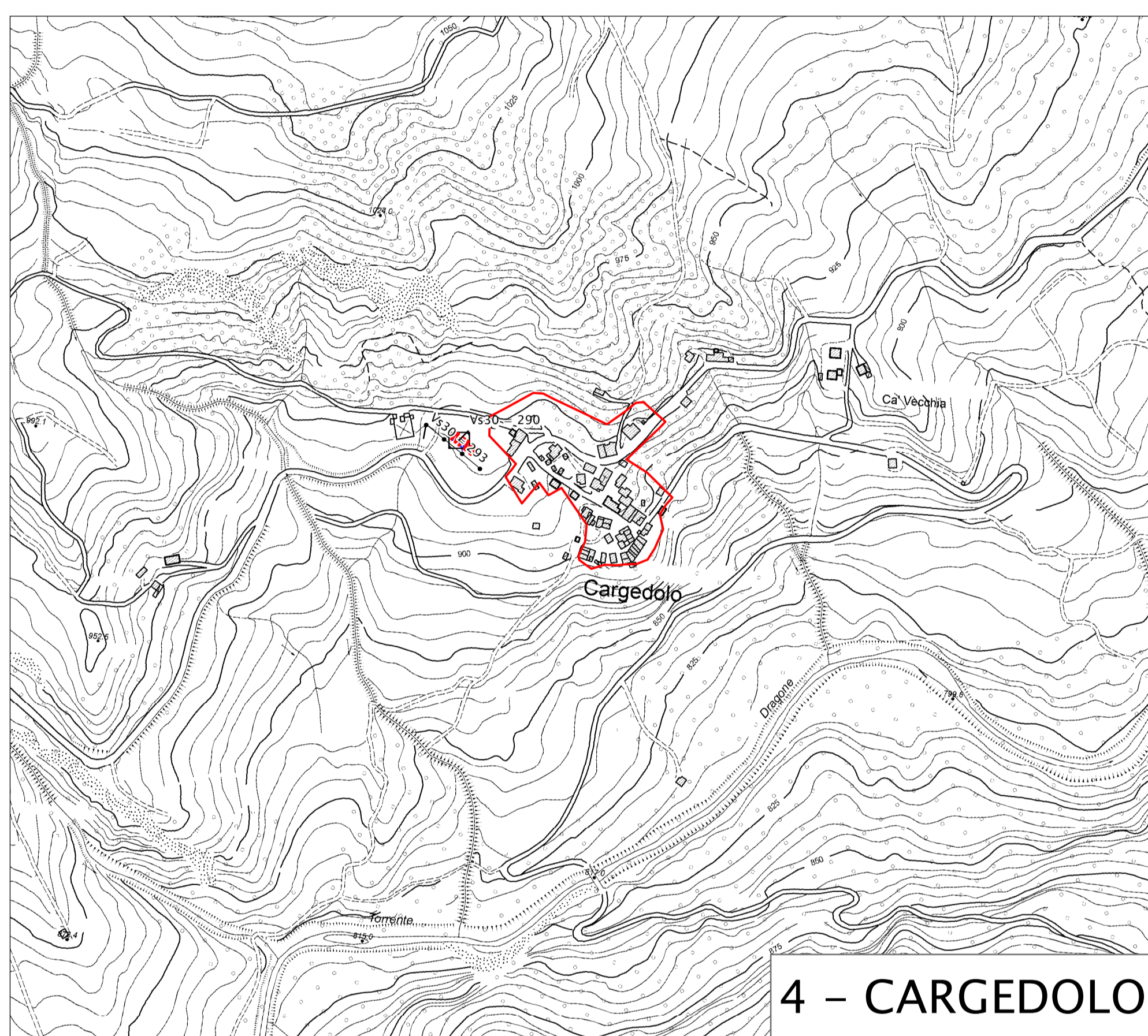
1 - ROMANORO



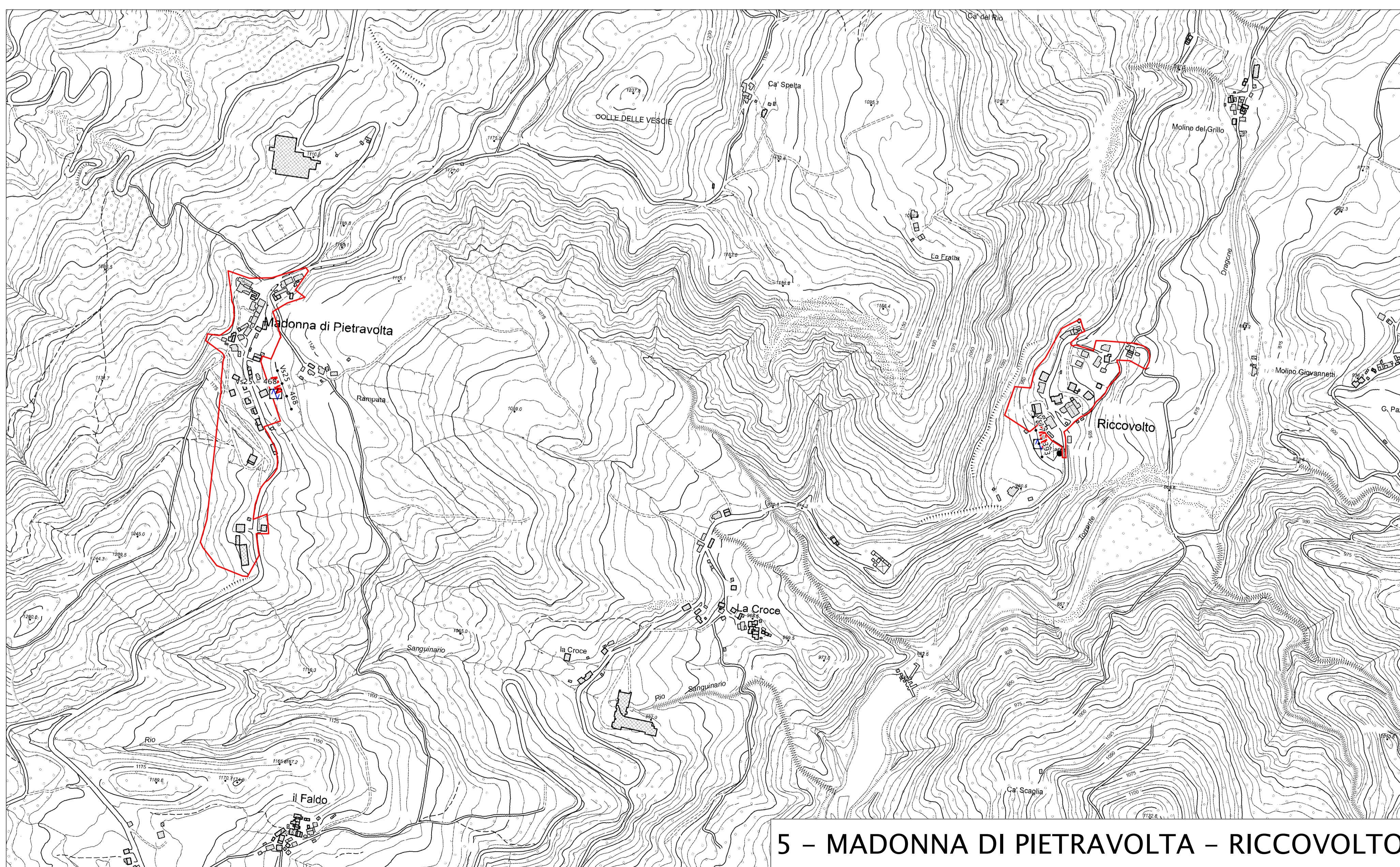
2 - ROVOLO



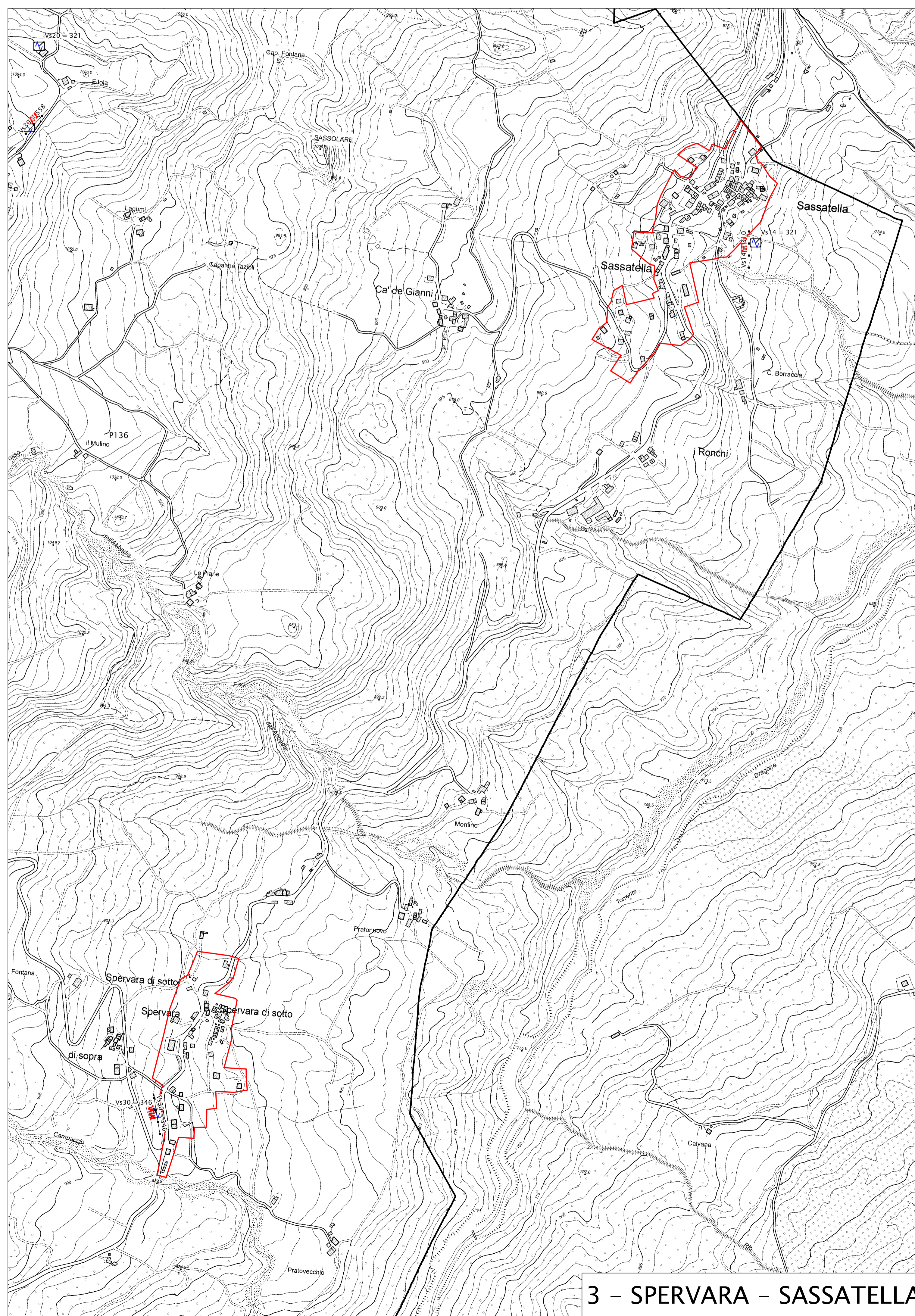
6 - VALLORSARA



4 - CARGEDOLO



5 - MADONNA DI PIETRAVOLTA - RICCOVOLTO



3 - SPERVARA - SASSATELLA